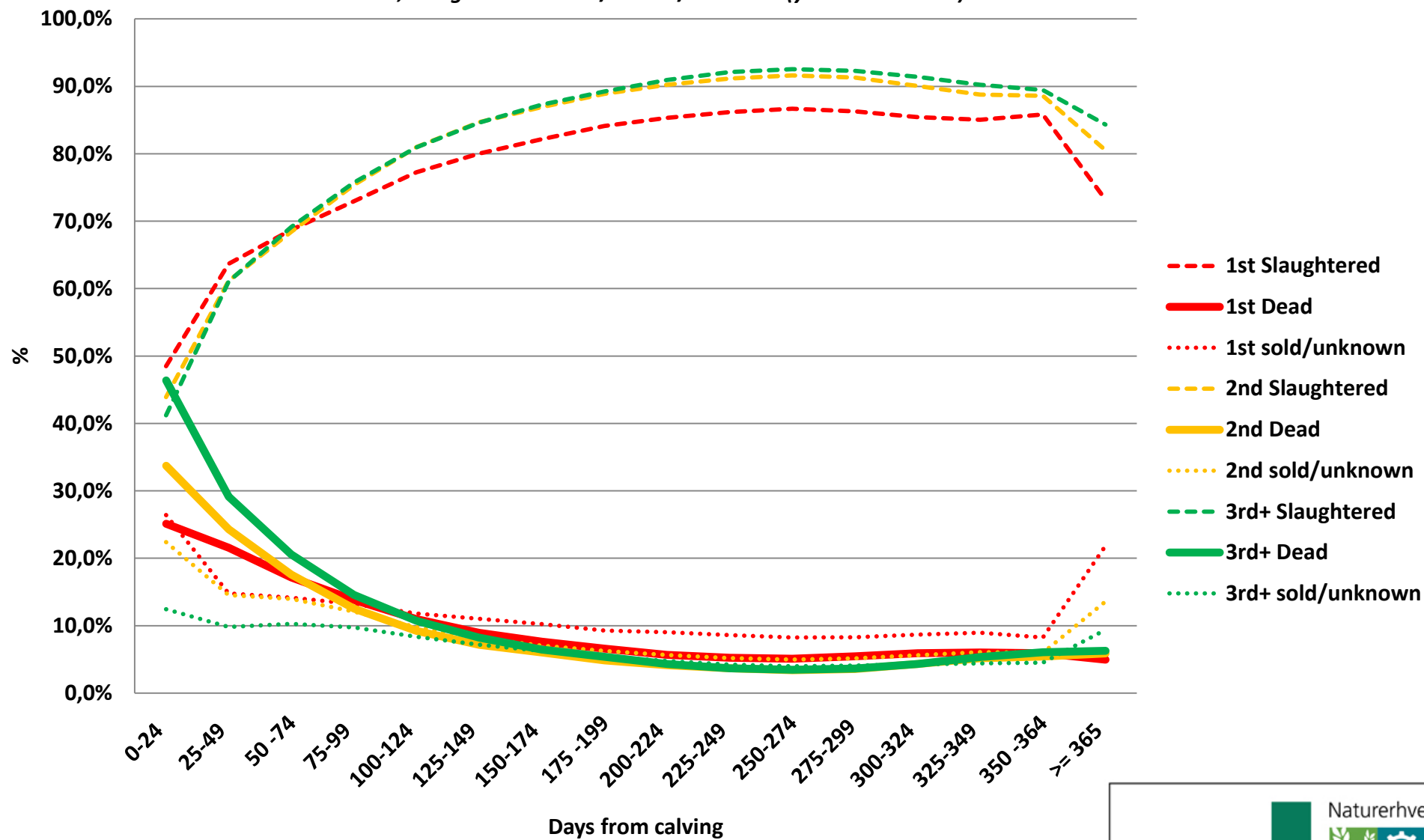
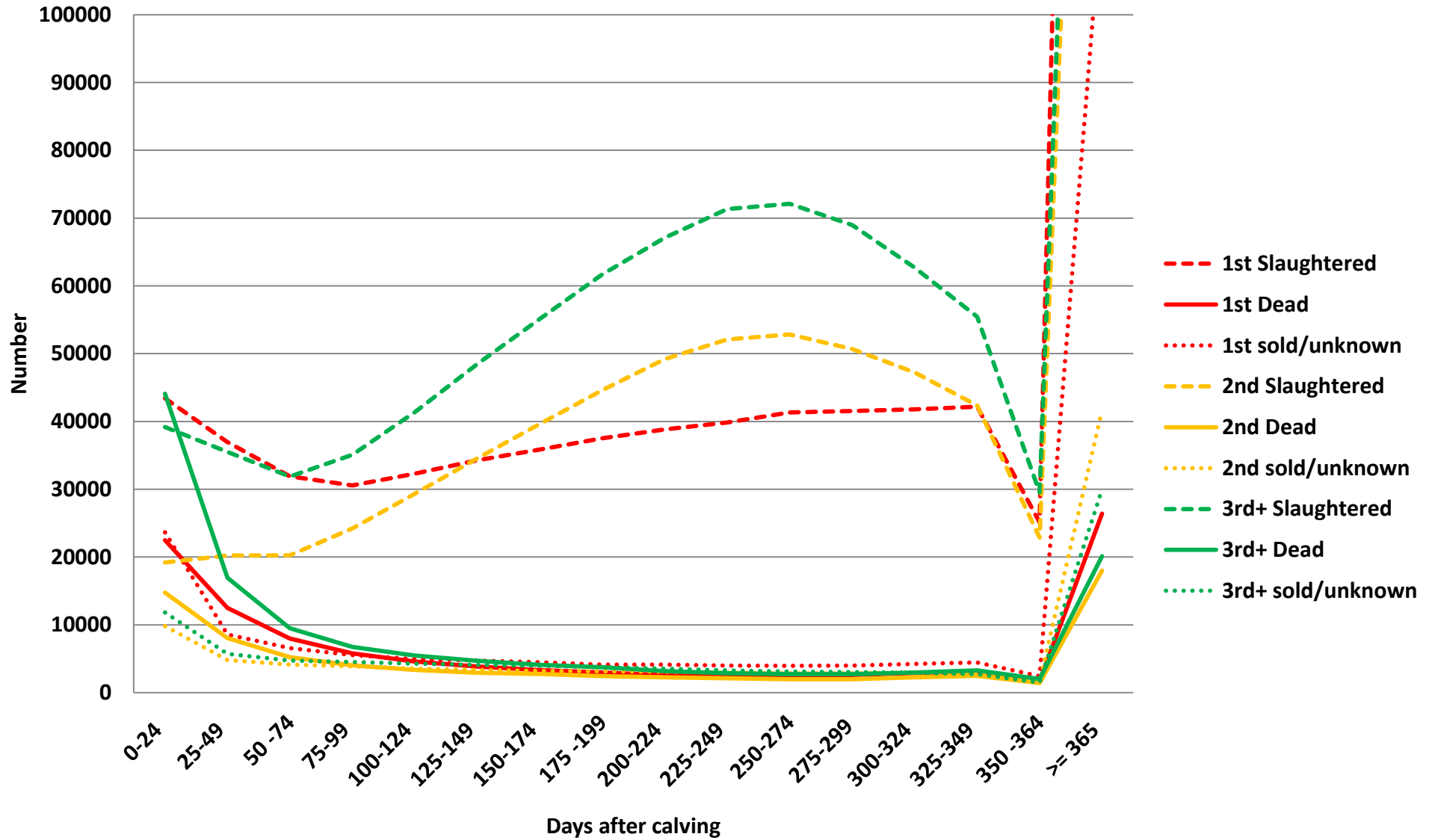


## HOL Distribution of cows disposed in 1986-2013 depending of stage of lactation *Dead, slaughtered or sold/moved/unknown (years 1986-2013)*



# HOL Number of cows disposed in 1986-2013 depending of stage of lactation

*Dead, slaughtered or sold/moved/unknown (years 1986-2013)*



Day	1st										Numbers			2nd										3rd and later				
	1st Slaughtered		1st sold/unknown		2nd Slaughtered		2nd sold/unknown		3rd+ Slaughtered		3rd+ sold/unknown		1st	2nd	3rd+	1st Slaughtered		1st sold/unknown		2nd Slaughtered		2nd sold/unknown		3rd+ Slaughtered		3rd+ sold/unknown		
	Dead	own	Dead	own	Dead	own	Dead	own	Dead	own	Dead	own				Dead	own	Dead	own	Dead	own	Dead	own	Dead	own	Dead	own	Dead
0-24	48,5%	25,1%	26,4%	43,9%	33,7%	22,4%	41,2%	46,4%	12,4%	89524	43715	95055	0-24	43397	22497	23630	19185	14735	9795	39164	44076	11815						
25-49	63,7%	21,5%	14,8%	61,1%	24,3%	14,6%	61,1%	29,1%	9,8%	58021	33062	58169	25-49	36949	12501	8571	20216	8035	4811	35517	16949	5703						
50-74	68,7%	17,1%	14,2%	68,4%	17,6%	14,0%	69,2%	20,6%	10,3%	46411	29600	46069	50-74	31887	7956	6568	20257	5206	4137	31857	9475	4737						
75-99	73,0%	13,8%	13,2%	75,4%	12,5%	12,1%	75,7%	14,5%	9,7%	41905	32098	46308	75-99	30576	5782	5547	24197	4019	3882	35068	6732	4508						
100-124	77,3%	11,0%	11,8%	81,0%	9,2%	9,8%	80,9%	10,7%	8,3%	41813	36196	51109	100-124	32304	4579	4930	29316	3342	3538	41367	5477	4265						
125-149	80,0%	8,9%	11,0%	84,7%	7,1%	8,2%	84,6%	8,2%	7,2%	42838	40809	57280	125-149	34286	3832	4720	34559	2916	3334	48469	4704	4107						
150-174	82,2%	7,6%	10,2%	86,9%	6,0%	7,0%	87,3%	6,5%	6,3%	43657	45608	63159	150-174	35867	3323	4467	39641	2752	3215	55124	4079	3956						
175-199	84,1%	6,6%	9,3%	88,9%	4,8%	6,3%	89,2%	5,4%	5,4%	44616	50168	69147	175-199	37531	2945	4140	44595	2430	3143	61694	3727	3726						
200-224	85,3%	5,7%	9,0%	90,2%	4,1%	5,6%	90,9%	4,3%	4,8%	45513	54538	73803	200-224	38827	2574	4112	49204	2259	3075	67107	3174	3522						
225-249	86,2%	5,2%	8,6%	91,2%	3,7%	5,2%	92,1%	3,7%	4,2%	46245	57139	77461	225-249	39845	2427	3973	52089	2096	2954	71348	2847	3267						
250-274	86,7%	5,1%	8,3%	91,6%	3,4%	5,0%	92,5%	3,5%	4,0%	47687	57682	77930	250-274	41330	2423	3934	52853	1965	2864	72120	2703	3107						
275-299	86,3%	5,4%	8,3%	91,3%	3,6%	5,2%	92,3%	3,6%	4,1%	48149	55516	74727	275-299	41553	2618	3978	50676	1974	2866	68970	2717	3040						
300-324	85,4%	5,9%	8,7%	90,1%	4,3%	5,6%	91,4%	4,3%	4,3%	48893	52423	68572	300-324	41773	2883	4237	47210	2267	2946	62679	2964	2929						
325-349	85,1%	6,0%	8,9%	88,8%	5,2%	6,1%	90,2%	5,4%	4,4%	49586	47718	61458	325-349	42174	2977	4435	42353	2473	2892	55457	3288	2713						
350-364	85,8%	5,9%	8,3%	88,6%	5,4%	6,0%	89,5%	6,1%	4,5%	29263	25800	33004	350-364	25115	1731	2417	22859	1401	1540	29523	1997	1484						
>= 365	73,2%	5,0%	21,8%	80,5%	5,9%	13,6%	84,3%	6,3%	9,4%	532643	306584	319874	>= 365	389932	26408	116303	246920	18006	41659	269791	20104	29979						